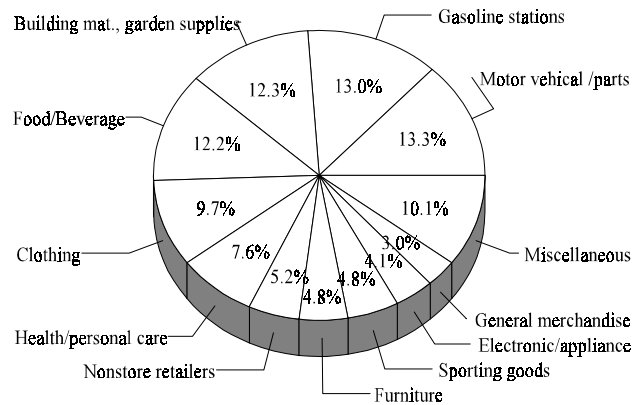


## Retail Trade Statistics for North Dakota: 1997

The retail trade sector comprises establishments engaged in retailing merchandise, generally without transformation, and rendering services incidental to the sale of merchandise. The retailing process is the final step in the distribution of merchandise; retailers are, therefore, organized to sell merchandise in small quantities to the general public. The 1997 Economic Census classifies businesses according to the North American Industry Classification System (NAICS), 1997, unlike the Standard Industrial Classification (SIC) used in 1992 and earlier censuses. Retail trade under NAICS excludes restaurants and bars, included in the definition of retail trade under the SIC. Retail trade under NAICS also includes several types of stores previously classified in wholesale trade.

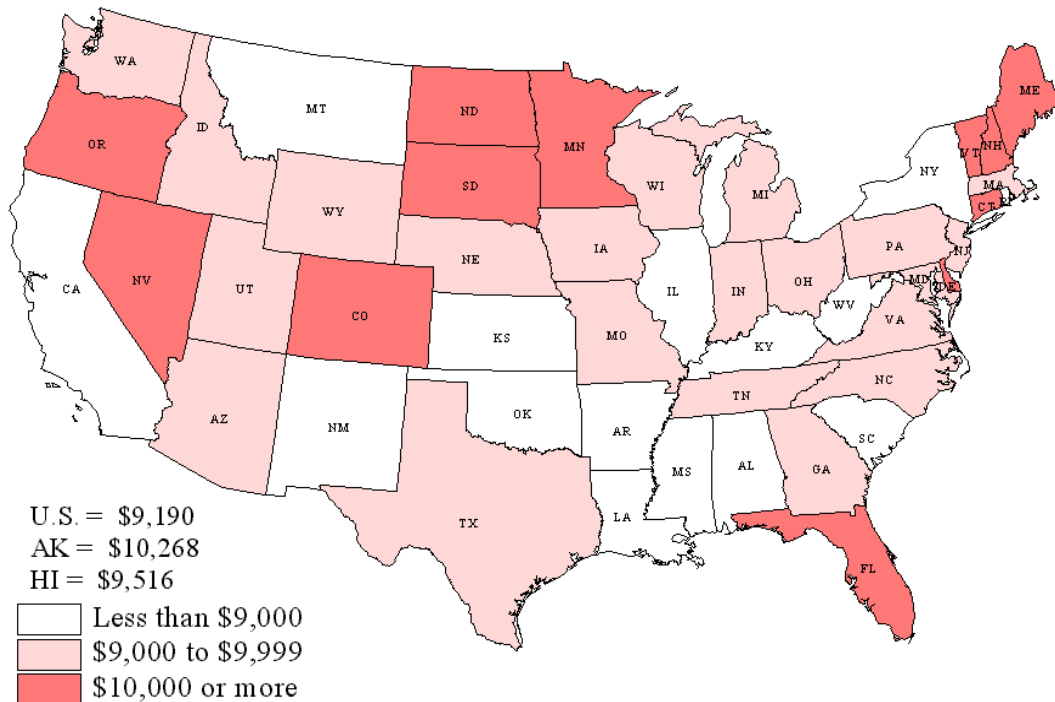
Retail trade statistics measured by the 1997 Economic Census include only establishments with paid employees and exclude governmental establishments.

**Retail Trade Establishments by Type in North Dakota: 1997**



Source: U.S. Bureau of the Census, Economic Census, 1997, updated every 5 years.  
URL: <http://www.census.gov/econ97>

## Retail Trade Sales, Shipments and Receipts Per Capita by State: 1997



Source: U.S. Bureau of the Census, Economic Census, 1997. URL: <http://www.census.gov/econ97>

**Summary Retail Trade Statistics for North Dakota by County: 1997**

County	Establishments (number)	Sales/Shipments/ Receipts (\$1,000)	Annual Payroll (\$1,000)	Paid employees (number)	Annual Payroll Per Employee (\$)	Population (number)	Sales Per Capita (dollars)
Adams	21	34,265	2,704	169	16,000	2,764	12,397
Barnes	76	81,128	7,422	602	12,329	12,059	6,728
Benson	18	14,727	689	76	9,066	6,843	2,152
Billings	6	1,371	169	10	16,900	1,102	1,244
Bottineau	54	57,300	4,722	325	14,529	7,417	7,725
Bowman	27	43,475	2,800	196	14,286	3,313	13,123
Burke	16	14,467	943	89	10,596	2,330	6,209
Burleigh	366	814,579	82,485	5,114	16,129	66,340	12,279
Cass	572	1,669,196	161,309	9,697	16,635	114,988	14,516
Cavalier	33	48,737	3,409	241	14,145	5,104	9,549
Dickey	41	46,889	4,279	297	14,407	5,635	8,321
Divide	15	9,003	1,037	70	14,814	2,420	3,720
Dunn	19	29,292	1,641	110	14,918	3,623	8,085
Eddy	11	9,858	679	59	11,508	2,847	3,463
Emmons	34	35,054	2,374	174	13,644	4,379	8,005
Foster	30	38,679	3,197	222	14,401	3,760	10,287
Golden Valley	17	17,661	1,170	88	13,295	1,903	9,281
Grand Forks	351	934,695	81,374	5,596	14,541	69,476	13,453
Grant	15	14,003	1,068	77	13,870	3,033	4,617
Griggs	22	22,564	1,893	133	14,233	2,851	7,914
Hettinger	13	16,869	1,123	79	14,215	2,959	5,701
Kidder	11	13,886	630	62	10,161	2,927	4,744
LaMoure	22	18,686	1,626	105	15,486	4,878	3,831
Logan	12	11,790	755	52	14,519	2,400	4,913
McHenry	23	14,277	1,147	109	10,523	6,169	2,314
McIntosh	27	29,007	2,120	146	14,521	3,573	8,118
McKenzie	27	23,774	2,150	179	12,011	5,740	4,142
McLean	46	47,035	3,926	343	11,446	9,759	4,820
Mercer	46	56,153	5,228	440	11,882	9,485	5,920
Morton	101	196,038	18,424	944	19,517	24,408	8,032
Mountrail	46	46,950	3,697	299	12,365	6,653	7,057
Nelson	22	15,465	1,198	114	10,509	3,849	4,018
Oliver	3	3,983	195	23	8,478	2,217	1,797
Pembina	77	102,957	8,354	620	13,474	8,621	11,943
Pierce	30	42,517	3,002	252	11,913	4,639	9,165
Ramsey	92	141,198	14,005	1,014	13,812	12,333	11,449
Ransom	39	39,445	3,343	275	12,156	5,821	6,776
Renville	14	27,656	1,875	105	17,857	2,836	9,752
Richland	91	137,868	11,864	797	14,886	18,318	7,526
Rolette	49	79,650	6,465	486	13,302	14,099	5,649
Sargent	28	25,493	2,049	161	12,727	4,425	5,761
Sheridan	8	6,076	481	33	14,576	1,765	3,442
Sioux	11	13,990	677	60	11,283	4,100	3,412
Slope	NA	NA	NA	NA	NA	853	NA
Stark	166	255,899	23,546	1,591	14,799	22,668	11,289
Steele	8	12,346	728	51	14,275	2,260	5,463
Stutsman	137	207,804	19,408	1,419	13,677	21,070	9,863
Towner	19	10,408	824	87	9,471	3,071	3,389
Traill	47	49,208	4,375	314	13,933	8,604	5,719
Walsh	91	116,122	10,168	706	14,402	13,703	8,474
Ward	339	753,712	74,268	4,819	15,411	59,050	12,764
Wells	42	41,435	3,403	238	14,298	5,225	7,930
Williams	138	207,494	19,718	1,417	13,915	20,280	10,231
North Dakota	3,569	6,702,134	616,136	40,685	15,144	640,945	10,457

Note: NA Data not available.

Source: U.S. Census Bureau, 1997 Economic Census, Retail Trade - Geographic Area Series: North Dakota, Dec.9, 1999.

