

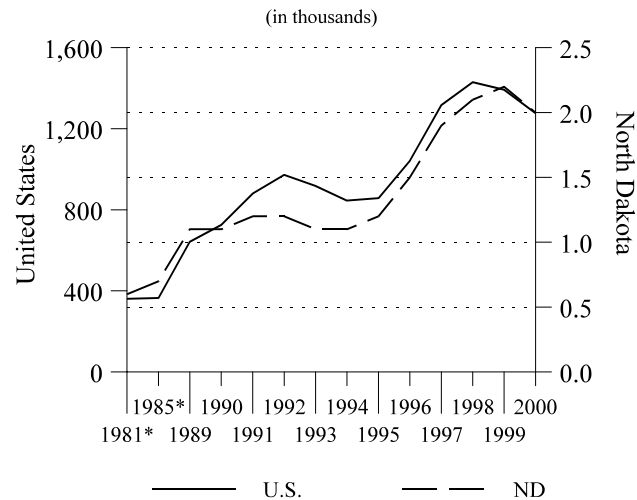
**Bankruptcy Cases in North Dakota: 1990 to 2000**

In 2000, approximately 2,000 bankruptcy petitions were filed in North Dakota, up from 1,100 in 1990 and up from 600 in 1981.

The number of bankruptcy cases in North Dakota rose 83 percent between 1981 and 1990. Cases rose another 82 percent between 1990 and 2000. On average, bankruptcy cases rose 6.8 percent per year between 1990 and 2000. The nation as a whole averaged 6.5 percent per year since 1990.

U.S. totals include outlying areas, not shown separately. The numbers in this report cover only bankruptcy cases files under the Bankruptcy Reform Act of 1978. Bankruptcy is defined as a legal recognition that a company or individual is insolvent and must restructure or liquidate. Petitions ‘filed’ means the commencement of a proceeding through the presentation of a petition to the clerk of court.

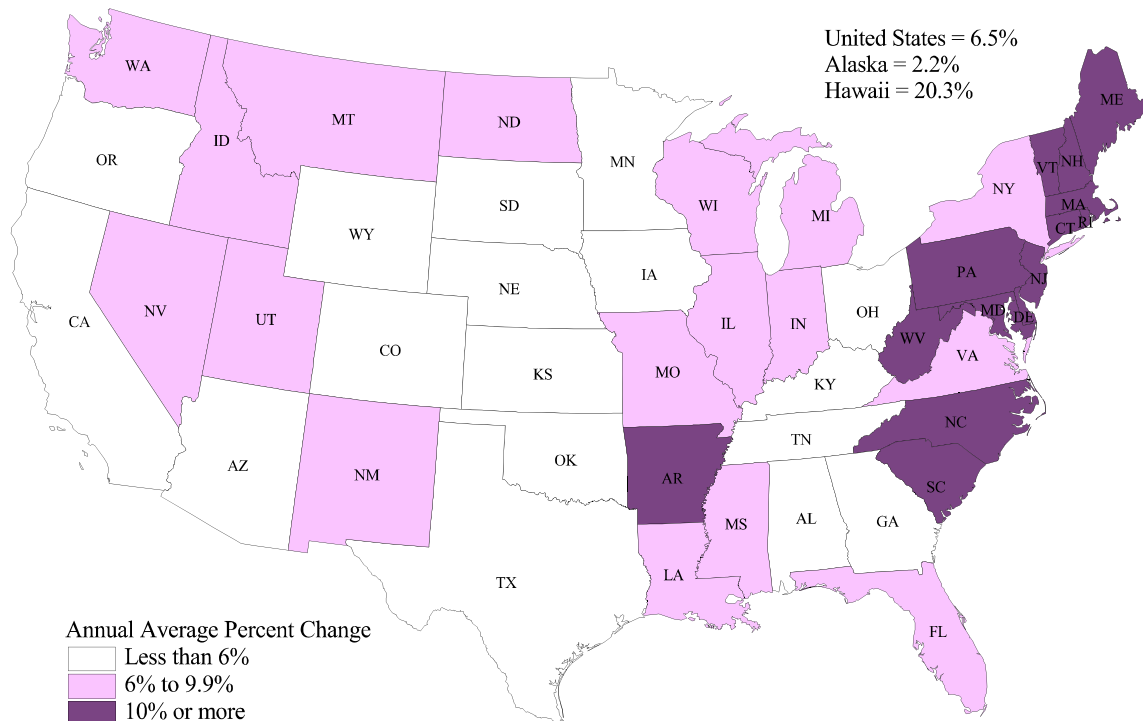
**Bankruptcy Cases in ND and the US: 1981-2000**



Note: \*Non-consecutive years. Source: Admin. Office of the U.S. Courts.

**Annual Average Percent Change in Bankruptcy Cases Filed by State: 1990 to 2000**

Source: Administrative Office of the U.S. Courts, unpublished data; obtained from the Statistical Abstract of the United States: 2001



**Bankruptcy Cases by State: 1990-2000 [In thousands (1,276.9 represents 1,276,900)]**

Area	1990	1991	1992	1993	1994	1995	1996	1997	1998	1999	2000
United States <sup>1</sup>	725.5	880.4	972.5	918.7	845.3	858.1	1,042.1	1,317.0	1,429.5	1,392.0	1,276.9
Alabama	24.7	27.8	27.8	25.5	23.7	24.3	29.3	33.3	33.8	31.2	31.4
Alaska	1.2	1.1	1.1	1.0	0.9	0.9	1.0	1.3	1.4	1.5	1.4
Arizona	17.7	19.3	20.4	18.5	17.0	14.8	18.0	23.2	24.7	23.7	21.7
Arkansas	6.8	7.7	8.6	7.5	6.7	7.9	11.2	14.7	16.5	16.8	16.3
California	103.2	124.2	152.8	159.7	150.9	140.4	164.3	200.1	211.3	200.2	160.6
Colorado	17.1	17.0	16.6	14.9	13.2	13.1	14.9	17.9	18.9	17.3	15.6
Connecticut	4.4	6.9	8.9	9.4	8.7	8.5	10.2	12.7	13.5	13.2	11.4
Delaware	0.9	1.3	1.4	1.6	1.3	1.4	1.9	2.4	2.7	3.9	4.9
Dist.of Columbia	1.0	1.2	1.4	1.4	1.3	1.4	1.6	2.2	2.8	2.8	2.6
Florida	31.9	43.4	52.4	46.6	41.9	43.4	51.9	67.4	76.4	79.2	74.0
Georgia	38.7	49.0	48.7	42.9	40.5	42.1	50.9	59.9	62.6	59.3	57.9
Hawaii	0.9	1.0	1.3	1.5	1.5	1.8	2.4	3.8	5.1	5.9	5.0
Idaho	4.1	4.2	4.1	3.9	3.4	3.7	4.8	6.2	7.5	7.3	7.3
Illinois	35.8	40.5	43.4	41.4	38.4	39.2	48.5	60.3	64.6	66.6	62.3
Indiana	22.2	26.8	28.2	24.8	22.0	22.3	26.0	33.7	38.5	38.9	37.5
Iowa	5.5	5.8	6.4	5.9	5.3	5.9	7.6	9.6	9.7	8.9	8.2
Kansas	8.1	9.6	9.6	8.3	7.9	8.5	10.1	12.5	13.2	12.3	11.4
Kentucky	13.6	15.6	15.5	12.8	11.6	13.0	16.6	20.6	22.1	21.4	20.8
Louisiana	12.9	13.3	14.2	13.2	12.3	13.4	17.1	22.6	23.2	22.5	23.1
Maine	1.5	2.2	2.3	2.0	1.8	1.9	2.6	3.6	4.4	4.5	4.1
Maryland	9.2	12.8	16.0	16.2	15.4	16.3	20.4	28.8	34.5	34.1	31.1
Massachusetts	7.6	12.9	15.9	16.4	14.8	14.3	15.9	22.5	22.1	20.9	16.7
Michigan	18.8	23.3	26.7	25.1	22.9	22.7	28.0	36.1	41.2	38.8	36.4
Minnesota	14.0	16.7	17.8	15.5	13.9	14.1	16.3	19.9	19.5	17.4	15.4
Mississippi	10.6	12.3	12.7	11.1	9.8	10.6	13.3	18.2	19.1	18.1	17.9
Missouri	13.4	17.3	19.2	16.6	14.4	15.1	19.8	24.2	27.4	27.9	26.3
Montana	1.8	2.1	2.1	1.9	1.9	2.1	2.5	3.2	3.7	3.7	3.3
Nebraska	3.8	4.5	4.4	3.9	3.6	3.4	4.6	5.7	6.1	5.8	5.6
Nevada	6.2	6.9	7.7	7.9	7.7	7.3	8.9	12.3	14.4	15.5	14.3
New Hampshire	1.8	3.4	4.0	3.7	3.3	3.1	3.4	4.3	5.1	4.5	3.9
New Jersey	12.6	19.4	24.0	24.9	23.8	25.5	30.6	38.8	44.5	44.1	38.7
New Mexico	4.0	4.5	4.5	4.3	3.5	3.7	5.2	6.8	7.9	7.7	7.1
New York	29.0	40.3	49.6	51.3	47.8	48.8	56.1	69.8	76.9	74.4	61.7
North Carolina	10.7	15.5	16.3	13.8	13.0	14.0	18.9	24.9	26.5	26.8	25.8
North Dakota	1.1	1.2	1.2	1.1	1.1	1.2	1.5	1.9	2.1	2.2	2.0
Ohio	36.8	42.8	44.0	37.9	32.5	32.4	38.8	50.1	55.5	55.3	53.6
Oklahoma	14.3	16.2	15.3	13.9	13.0	13.2	16.1	20.8	22.5	21.3	19.3
Oregon	11.3	13.5	14.3	13.3	12.7	13.2	15.1	17.9	17.9	18.2	18.1
Pennsylvania	15.8	20.8	24.3	23.0	20.2	22.0	28.2	38.3	45.2	45.7	43.8
Rhode Island	1.7	3.1	3.6	3.5	3.1	3.0	3.8	5.1	5.4	5.3	4.8
South Carolina	4.8	6.9	7.4	6.8	6.4	6.9	8.5	10.7	11.3	11.6	11.7
South Dakota	1.4	1.6	1.4	1.4	1.3	1.3	1.7	2.1	2.3	2.3	2.1
Tennessee	34.2	40.6	41.6	38.2	35.6	35.5	43.7	52.1	52.6	48.2	47.1
Texas	41.7	46.6	49.5	47.3	41.8	43.8	54.2	69.5	72.0	68.6	62.9
Utah	8.0	8.0	8.3	7.5	6.6	6.9	8.0	10.6	13.5	14.0	14.4
Vermont	0.5	0.8	1.0	0.9	0.8	0.9	1.2	1.7	1.9	1.9	1.6
Virginia	19.3	25.3	29.1	26.8	24.4	25.5	31.7	40.7	43.4	41.2	37.1
Washington	17.0	17.2	18.7	17.9	17.5	18.6	25.0	31.7	33.6	32.4	31.2
West Virginia	3.5	4.0	4.5	4.0	3.6	3.8	4.9	7.6	8.8	8.4	8.2
Wisconsin	10.2	12.1	12.4	11.3	10.2	11.8	14.4	17.9	19.6	18.9	18.0
Wyoming	1.5	1.5	1.4	1.3	1.2	1.2	1.5	2.0	2.1	2.2	2.0

Note: <sup>1</sup> Includes outlying areas not shown separately.

Source: Administrative Office of the U.S. Courts, unpublished data; obtained from the *Statistical Abstract of the United States*, various years.