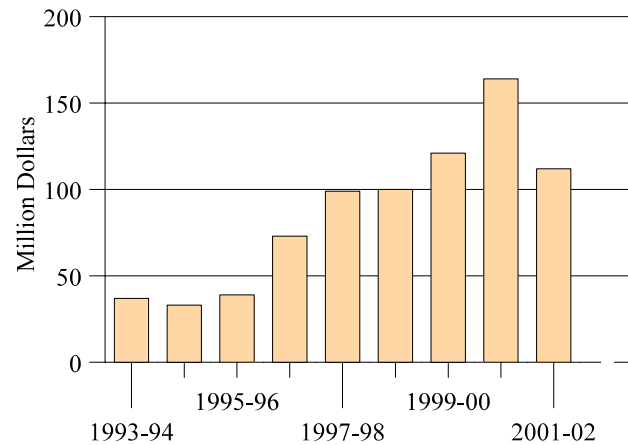


## Net Taxable Income Flow Due to Migration for North Dakota: 1993-94 to 2001-02

Analysis of Federal individual income tax returns over the past nine years has revealed a consistent loss of income to North Dakota as a direct result of migration. Between 1993 (the first year that IRS records were made available for county flow analysis) and 2002 (the most current data available), people moving to North Dakota brought with them \$4 billion in taxable income. People moving out of the state took with them \$4.7 billion. Thus, over the last decade, the net loss of taxable income to North Dakota, as a result of the net exchange of movers totaled \$778 million.

For information on methodology and limitations of these data, along with further discussion and additional tables, visit the following URL to obtain "North Dakota County Migration Flows: 1998-99 to 2000-01", a North Dakota State Data Center report in PDF format:  
<http://www.ndsu.nodak.edu/sdc/publications/reports.htm>

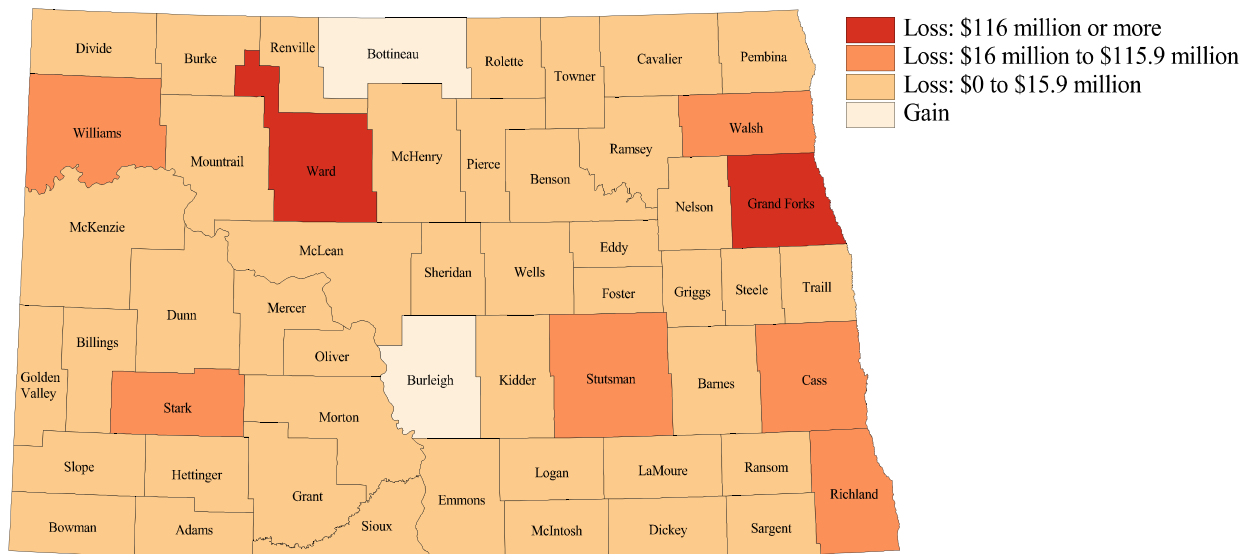
**Net Out-Flow of Taxable Income from North Dakota Due to Migration: 1993-94 to 2001-02 (Million \$)**



U.S. Internal Revenue Service, County-to-County Migration Flow files for North Dakota.

## Net Movement of Aggregate Adjusted Taxable Income Due to Migration for North Dakota by County: 1993-94 to 2001-02

Source: U.S. Internal Revenue Service (IRS), County-to-County Migration Flow Files



## Net Movement in Aggregate Adjusted Taxable Income Due to Migration for North Dakota: 1993-94 to 2001-02

Note: Data are in thousands of dollars (\$1,000). For example, 777,776 equals \$777,776,000. NR=Data are not reported.

Source: U.S. Internal Revenue Service (IRS), County-to-County Migration Flow files, 1993-94 to 2001-02. For information on methodology and limitations of these data, along with further discussion and additional tables, visit the following URL to obtain "North Dakota County Migration Flows: 1998-99 to 2000-01", a North Dakota State Data Center report in PDF format: <http://www.ndsu.nodak.edu/sdc/publications/reports.htm>

Area	Net Movement in Aggregate Adjusted Taxable Income Due to Migration (\$1,000)									1993-94 to 2001-02
	1993-94	1994-95	1995-96	1996-97	1997-98	1998-99	1999-00	2000-01	2001-02	
North Dakota	-37,365	-33,468	-38,506	-73,050	-98,857	-100,383	-120,634	-163,560	-111,953	-777,776
Adams	123	-557	-186	-432	-963	-396	-1,750	-447	-836	-5,444
Barnes	-1,547	-188	-180	-39	-1,354	-1,181	-2,959	-4,167	-2,396	-14,011
Benson	210	-173	-1,324	-327	-866	-1,267	-1,585	-1,450	-1,278	-8,060
Billings	NR	NR	NR	-354	NR	-50	NR	NR	NR	NR
Bottineau	-65	-160	-630	-359	-668	-1,272	6,051	-1,189	-1,176	532
Bowman	-1,479	-687	-257	939	-133	-346	-734	-1,583	247	-4,033
Burke	-872	-630	-515	-760	-599	-459	216	-279	-908	-4,806
Burleigh	1,891	5,180	4,727	-1,839	-4,495	-6,735	-2,801	2,718	5,812	4,458
Cass	-4,446	3,067	-1,182	1,519	484	-1,183	-8,453	-16,293	-13,856	-40,343
Cavalier	-1,127	-1,653	-851	-1,539	-950	-2,567	-1,606	-2,194	-1,047	-13,534
Dickey	100	-877	-838	400	-252	-2,234	-649	-1,381	-1,474	-7,205
Divide	-328	-621	-675	-543	-570	-547	-552	-637	-653	-5,126
Dunn	-185	-335	-626	-787	-712	-1,095	-63	69	-142	-3,876
Eddy	-98	-73	334	-131	140	-1,044	-196	-785	-614	-2,467
Emmons	-506	71	-967	-311	-1,269	-667	-765	-1,107	-1,091	-6,612
Foster	298	-101	56	-1,054	447	295	-416	-2,075	-755	-3,305
Golden Valley	-222	-622	-457	-367	-486	-1,023	-353	-975	-329	-4,834
Grand Forks	-6,365	-13,338	-18,776	-26,909	-37,939	-34,387	-26,064	-33,819	-21,406	-219,003
Grant	-362	-206	-809	-378	-954	-568	-29	-570	-911	-4,787
Griggs	-136	-435	-1,176	-546	-96	-1,306	-792	-540	-577	-5,604
Hettinger	-404	-695	-374	-700	-1,473	-612	-955	-787	-575	-6,575
Kidder	-1,135	-984	-56	-775	-142	-914	-690	-226	-818	-5,740
La Moure	-1,088	-120	-769	-505	-2,294	-1,080	-1,199	-846	-1,491	-9,392
Logan	-110	-1,134	-69	-323	-421	-603	-520	-652	-675	-4,507
McHenry	-961	108	-421	262	-1,451	-1,466	-1,190	-3,340	-558	-9,017
McIntosh	-333	82	-355	-612	-783	-959	-179	-790	-540	-4,469
McKenzie	-929	-1,529	47	-914	-1,145	773	-1,337	-410	-1,829	-7,273
McLean	-1,000	-472	-578	-1,313	-292	-1,207	-2,509	-1,989	-2,147	-11,507
Mercer	-1,685	490	-84	-1,670	-1,364	-3,990	-3,210	-2,378	-945	-14,836
Morton	40	2,066	92	1,455	478	-2,055	-1,066	-6,741	-1,826	-7,557
Mountrial	-257	790	-1,714	-1,577	-1,728	-816	-467	-835	-975	-7,579
Nelson	-173	-160	-1,194	-264	-1,482	-938	-832	-962	-1,227	-7,232
Oliver	-433	-23	410	56	-354	-536	-448	-1,975	94	-3,209
Pembina	-615	-146	-154	-2,005	-2,147	-2,556	-2,327	-3,303	-1,704	-14,957
Pierce	-82	135	-1,011	-421	-406	-872	-8,576	464	-1,750	-12,519
Ramsey	56	-975	-1,137	-1,072	-3,260	16,467	-2,387	-5,682	-2,367	-357
Ransom	-567	-325	64	-43	-593	148	-227	-182	-24	-1,749
Renville	-369	-1,218	-363	-362	-534	-477	-595	-691	-371	-4,980
Richland	-622	-1,257	-619	-2,211	-3,009	-5,880	-5,569	-7,695	-2,760	-29,622
Rolette	2,005	654	-518	-622	-639	-1,906	-1,668	-1,352	-2,234	-6,280
Sargent	44	456	-1,007	-68	129	-826	-592	-1,199	-1,172	-4,235
Sheridan	-211	-139	-399	NR	-515	306	-656	-465	95	NR
Sioux	-164	-109	-257	-144	-444	-418	-582	-166	128	-2,156
Slope	NR	NR	NR	NR	NR	-29	NR	NR	-203	NR
Stark	-3,139	-7,435	-2,288	-793	-1,258	-5,831	-5,819	-5,702	-4,013	-36,278
Steele	-322	-218	-153	-436	-909	-817	-362	-698	-1,982	-5,897
Stutsman	-232	-5,079	-520	-560	-1,764	-2,316	-2,496	-8,904	-5,421	-27,292
Towner	-421	34	-626	-757	-1,075	-930	-947	-1,864	-1,068	-7,654
Trail	-55	-496	361	-854	NR	-57	-1,319	-1,437	-461	NR
Walsh	-2,373	-596	-917	-1,000	-1,555	-2,446	-2,005	-2,965	-3,081	-16,938
Ward	-2,639	-631	1,577	-18,618	-13,416	-13,982	-18,683	-26,537	-24,670	-117,599
Wells	-882	-601	-376	-429	-98	-593	-2,168	-3,008	-694	-8,849
Williams	-3,193	-1,603	-710	-1,771	-1,891	-4,941	-4,395	-3,634	-760	-22,898